

**PREMIUM SERIES
COMBINATION LOCK
INSTRUCTIONS**



Read these instructions thoroughly before operating lock or changing the combination.

Key Number

.....

Serial Number

.....

Combination Number

1st 4 Times (L)

.....

2nd 3 Times (R)

.....

3rd 2 Times (L)

.....

4th (R) TURN DIAL UNTIL IT STOPS

.....

!! Do not store access keys inside your safe !!

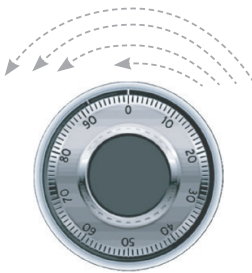
Enquiries Ph (03)9786 0055

USING YOUR SAFE

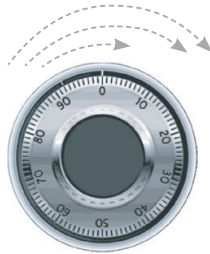
To unlock combination

Dial the combination (e.g.. 52-86-34) using the opening index.

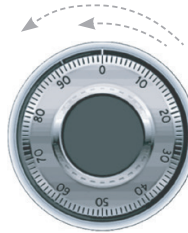
- Turn dial to the **LEFT** stopping when "52" is aligned with the opening index the **FOURTH** time
- Turn dial to the **RIGHT** stopping when "86" is aligned with the opening index the **THIRD** time
- Turn dial to the **LEFT** stopping when "34" is aligned with the opening index the **SECOND** time
- Turn dial firmly to the **RIGHT** until the dial comes to a dead stop.



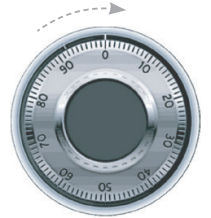
1st 4 Times (L)



2nd 3 Times (R)



3rd 2 Times (L)



4th (R) TURN DIAL
UNTIL IT STOPS

TO LOCK COMBINATION

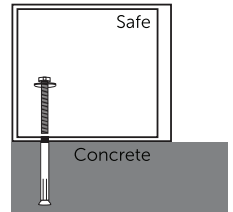
Close door and turn the dial to the **LEFT** at least 4 full revolutions.

INSTALLING YOUR SAFE

For installation into concrete surfaces use masonry bolts provided.

1. Install your safe in a location that is secure and sturdy.
2. Drill holes for masonry bolts in the desired location.
3. Insert the masonry bolts through the holes in the safe and into the concrete.
4. Tighten masonry bolts using a socket or spanner.

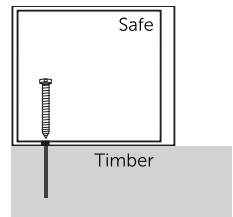
All safes should be bolted down to ensure the best possible security.



For installation into timber surfaces use coach screws.

1. Install your safe in a location that is secure and sturdy.
2. Pre-drill 5mm holes in the desired location.
3. Insert the coach screws through the holes in the safe and into the timber.
4. Tighten coach screws using a socket or spanner

All safes should be bolted down to ensure the best possible security.



OTHER NOTES

- If you wish to clean your safe, use a damp cloth. Do not use liquid or sprayers.
- Never try to dismantle the product by yourself.
- Safe must be installed in an upright position or the warranty shall be void.
- Keep this record of your key number and combination in a secure place, not inside the safe.

A safe is an aid only in reducing theft, it must form only a part of a range of security measures used. Sandleford Hardware (Distributor of Karbon) will not accept or be held responsible for any loss or damage caused in the event of theft or unauthorised use.