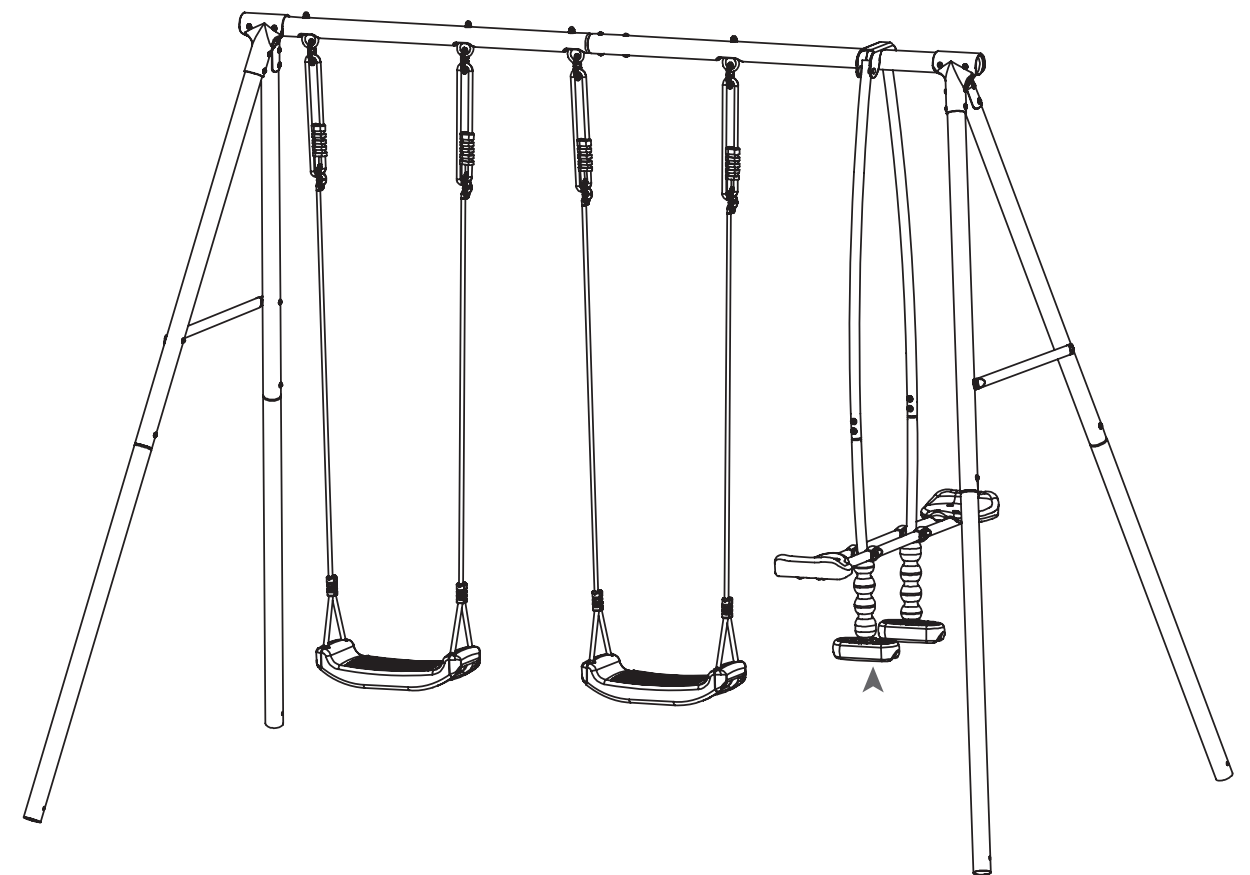


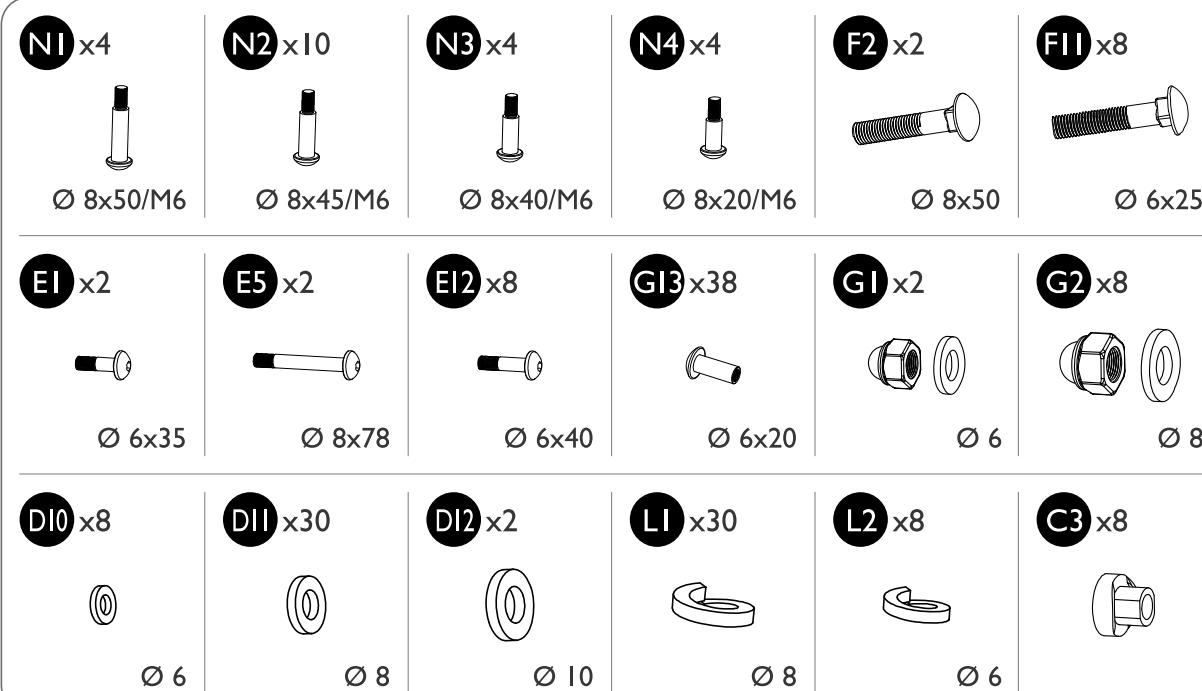
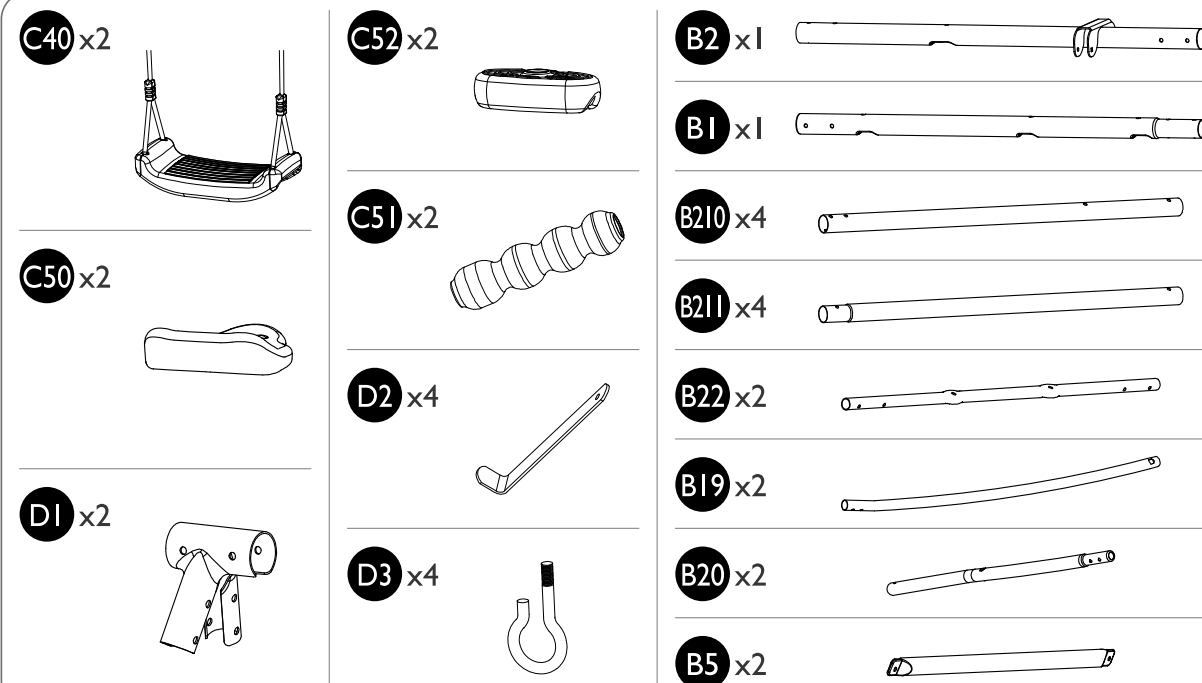
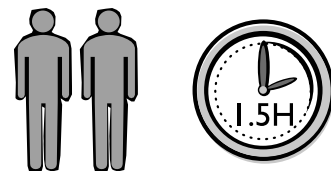
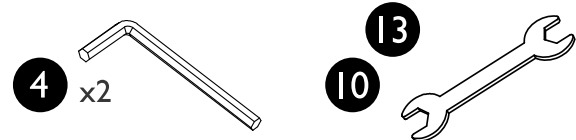
# 3 Swing Set

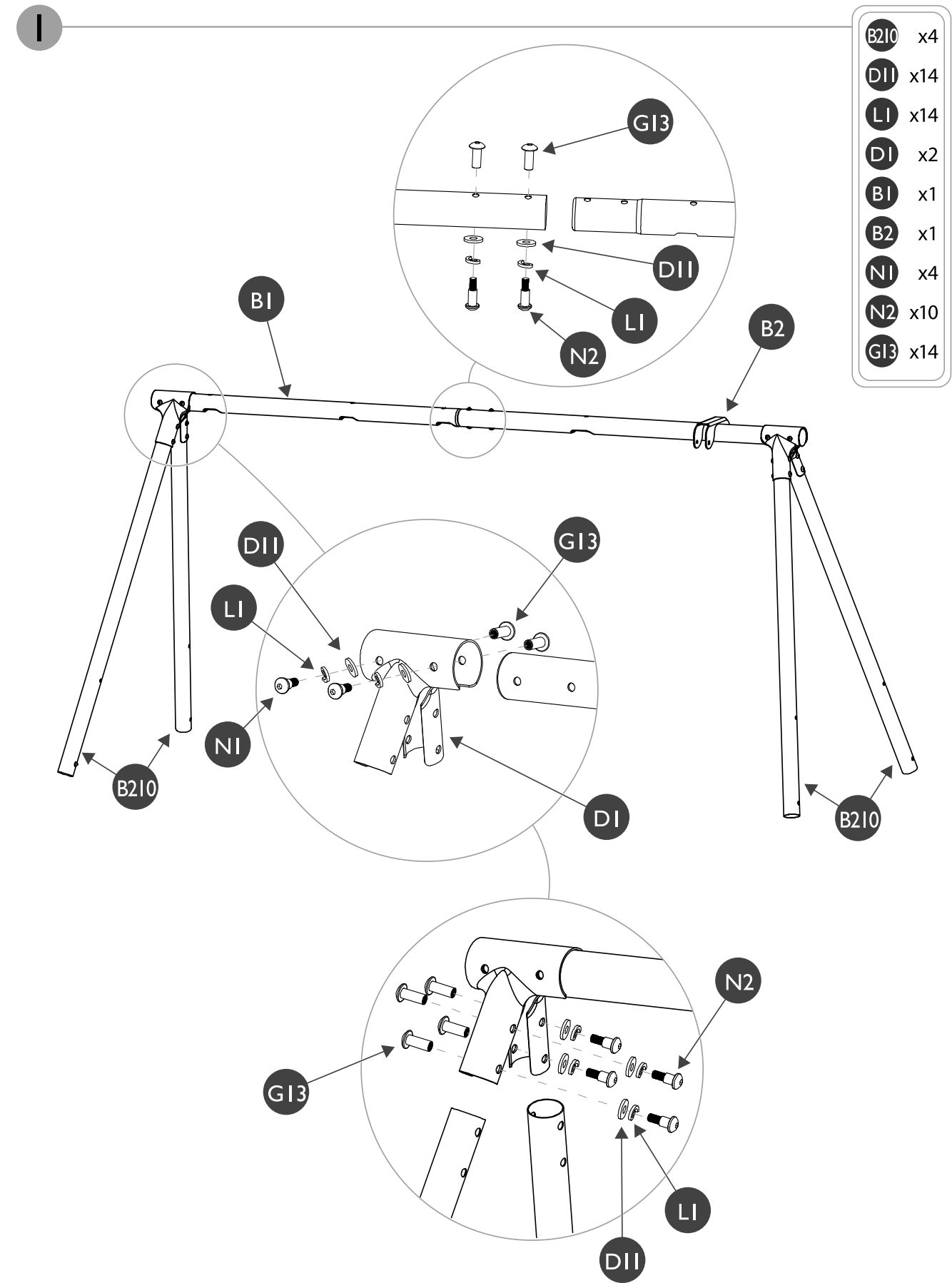
MSS012



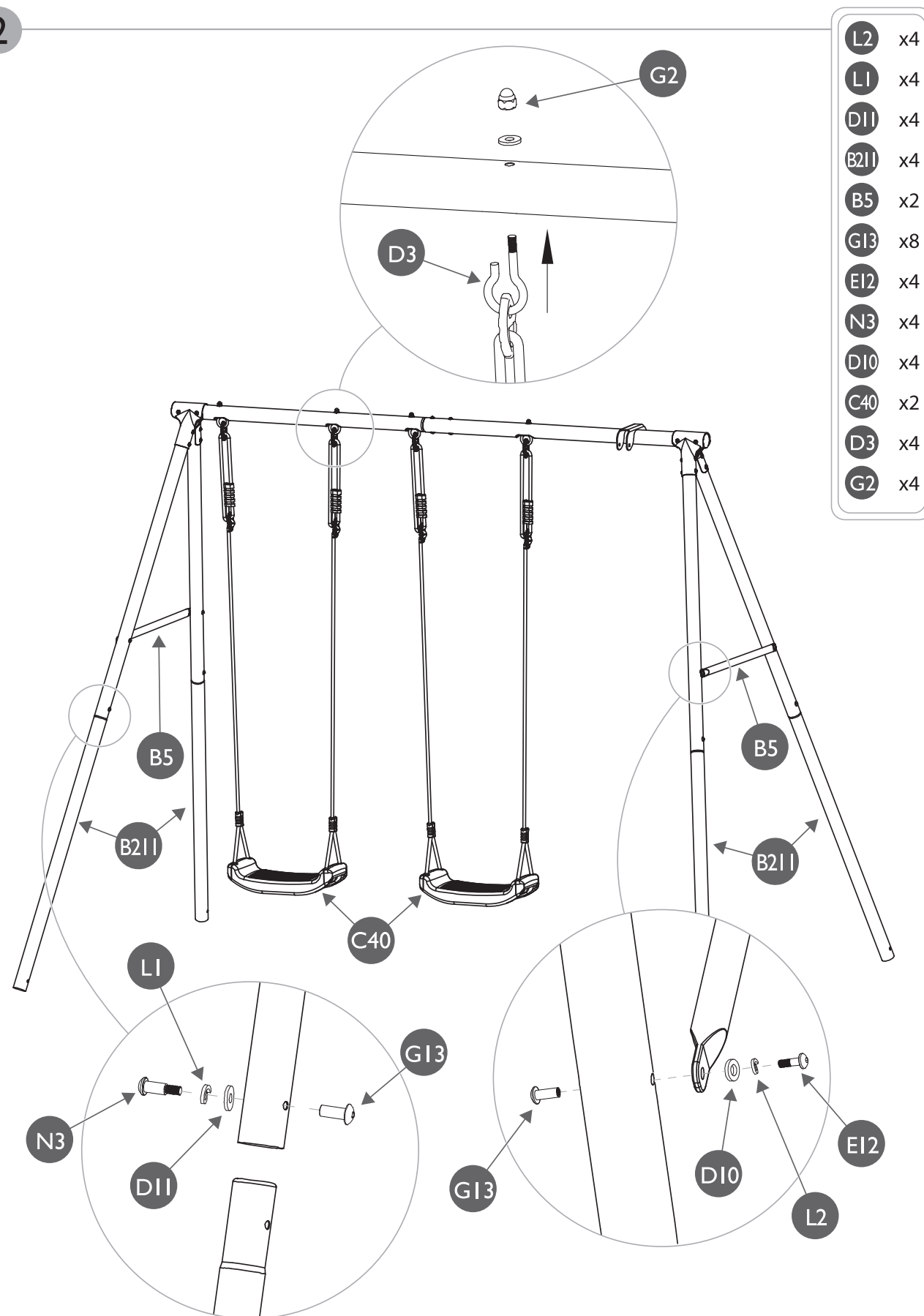
**WARNING: ONLY FOR DOMESTIC OUTDOOR USE.**

This swing satisfies all the requirements of the European standard EN71 and Australian Standard AS/NZS ISO 8124 and has been certified by an independent laboratory. To guarantee safety, please give special attention to the assembly, safety, and care instructions detailed in this document.





2



### ASSEMBLY ADVICE

Please follow the assembly instructions exactly as given.

- This product must be assembled by an adult.
- Keep a copy of your assembly instructions for future reference. This can be particularly handy for identification of parts if any after sales service is required.
- The EN 71-8, chapter 4-6 standard requires a 40cm minimum distance between the ground and a 2 person swing and a 35cm minimum distance between the ground and swings. These distances are important for safe use. After having assembled the playground, check these distances. In case of non-conformity, do not hesitate to contact our after sales service.
- We advise that the swing set is not faced towards the sun.
- Before commencing, check that none of the parts are missing. If you find that you are missing a part, please contact our after sales service department.
- Dispose of packaging thoughtfully.
- Do not allow children to play with packaging.

### SAFETY ADVICE

This product must not be used by children under the age of 36 months. It is suitable only for children between the ages of 3 and 12 years with a maximum weight of 50kg. It must be used under adult supervision.

- As this product contains small parts that could be swallowed, please keep parts away from children under 36 months.
- This product is only for private use at home and must never be used in parks and public gardens, in schools, camp sites, hotels, public leisure areas, etc.
- The swing set should be set up on a flat surface 2 metres away from all other things, structures or obstacles (walls, fences, trees, washing lines or electric cables etc.) that could cause injury during use.
- This product must not be set up over hard surfaces such as concrete, asphalt or other hard surfaces. We recommend installation over grass or other such soft surfaces.
- This swing set must be embedded firmly into the ground. Please follow the instructions carefully for doing so. Only use this product when the concrete is dry.
- Anchors should be placed level with or below ground level in order to reduce tripping hazards.
- The anchorage must be checked regularly, in addition to the hooks and fixtures.
- Dispose of packaging thoughtfully.
- Do not allow children to play with packaging.

### FIXING INTO THE GROUND

- 1- Assemble the swing set completely and place it in the desired place.
- 2- Locate and mark the position for the sealing legs.
- 3- Check the dimensions showed on the diagram, and correct if necessary.
- 4- Under the four feet, mark a square of 350 X 350 mm and dig a 350 mm deep hole.
- 5- Fill these holes with concrete following the diagram of the recto. The top of the concrete should not exceed ground level.
- 6- Place the sealing legs in the concrete in the located place (see point 2). Make sure the drilled end of the sealing legs is above the level of the concrete.
- 7- Once the concrete is set, screw the feet into the sealing legs.
- 8- Ensure that the concrete is completely dry before using the swing.
- 9- Cover the concrete with soil. We strongly advise checking this anchoring periodically.

### MAINTENANCE

All metal parts are galvanized steel and powder coated for rust protection; however, in certain areas close to the sea we advise that additional rust prevention treatment may be necessary.

The surfaces of all the parts should be checked at least once a month, especially for the fixtures such as hooks on the overhead beam. If the fixtures and hooks show wear over 10% of their original thickness, then they should be replaced with the same fixtures as those originally provided. All parts that are under constant friction should be oiled regularly with a suitable lubricant.

The ground on which the product is placed should be controlled regularly. All elements such as stones or other objects that could cause injury in the case of a fall should be removed. It is advised to remove the apparatus during the winter period, when not in use, to avoid any deterioration due to bad weather conditions.

All used apparatuses and/or parts must be replaced by a part delivered by our after sales service, or by an approved retailer.

### PRACTICAL ADVICE

quent questions and observations

### SAFETY

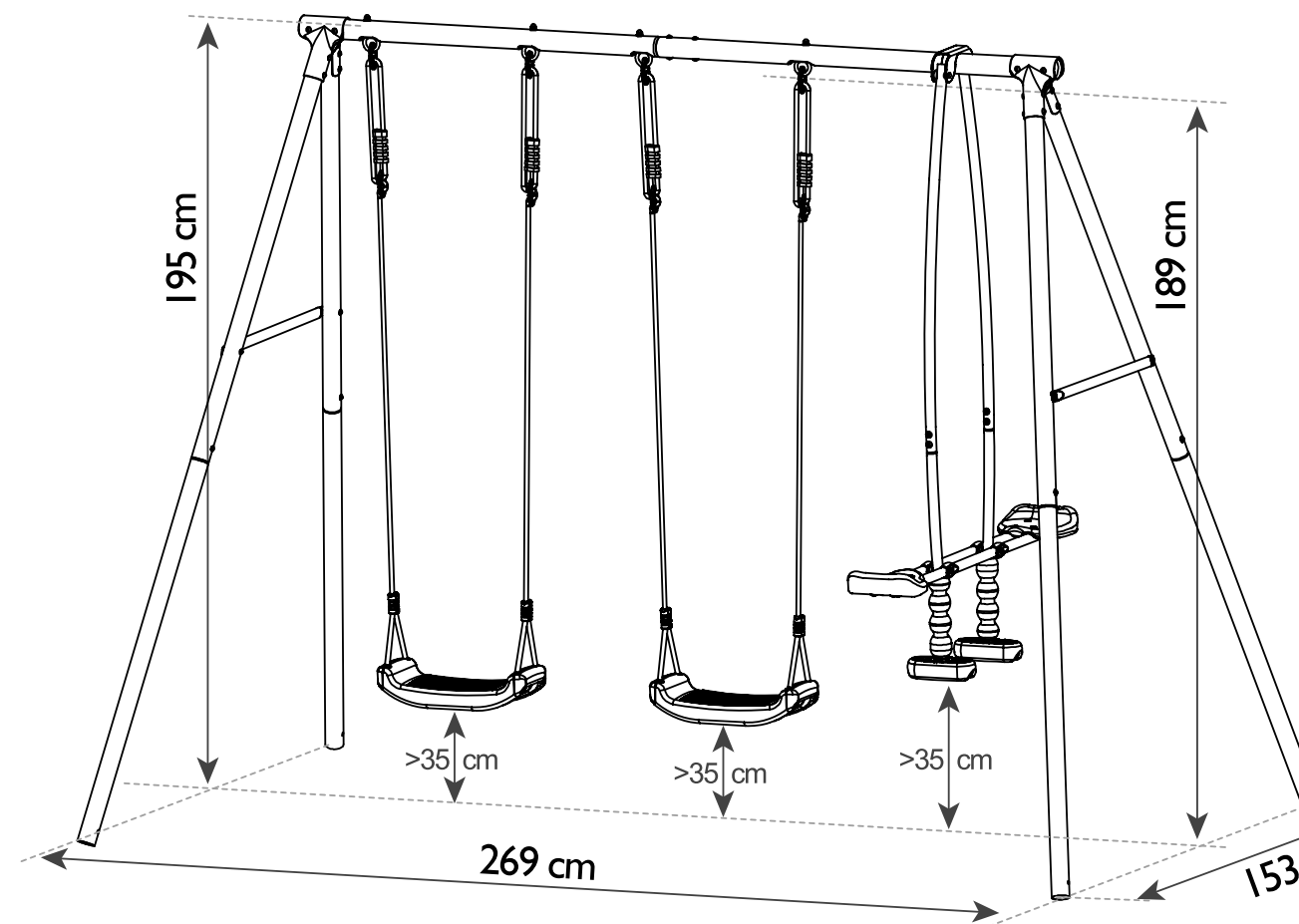
Safety checks should be carried out regularly on this product. These checks should include, if necessary, removing any sharp edges, replacing missing screw covers, and tightening the nuts and bolts. These checks should be done to avoid any danger or upturning of the swing set through normal wear and tear.

### SAFETY

If the swing set develops a squeak, apply a suitable gel lubricant. Do not use liquid lubricant as it will run down the fixtures and apparatus. The height of the swing can be adjusted using the plastic eyelet fixture. By pulling the rope through the fixture, the height of the seat can be adjusted to suit the user. The dimensions given are indicative only; they may vary according to the assembly method.

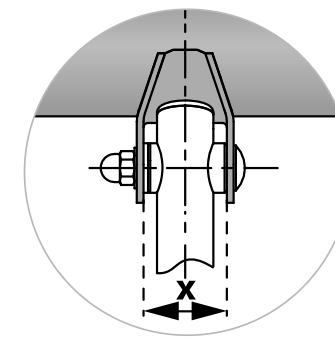
This Swing Set must be used under adult supervision. Keep any additional components; they may be useful for later operation of maintenance.

**CAUTION !** Fall danger

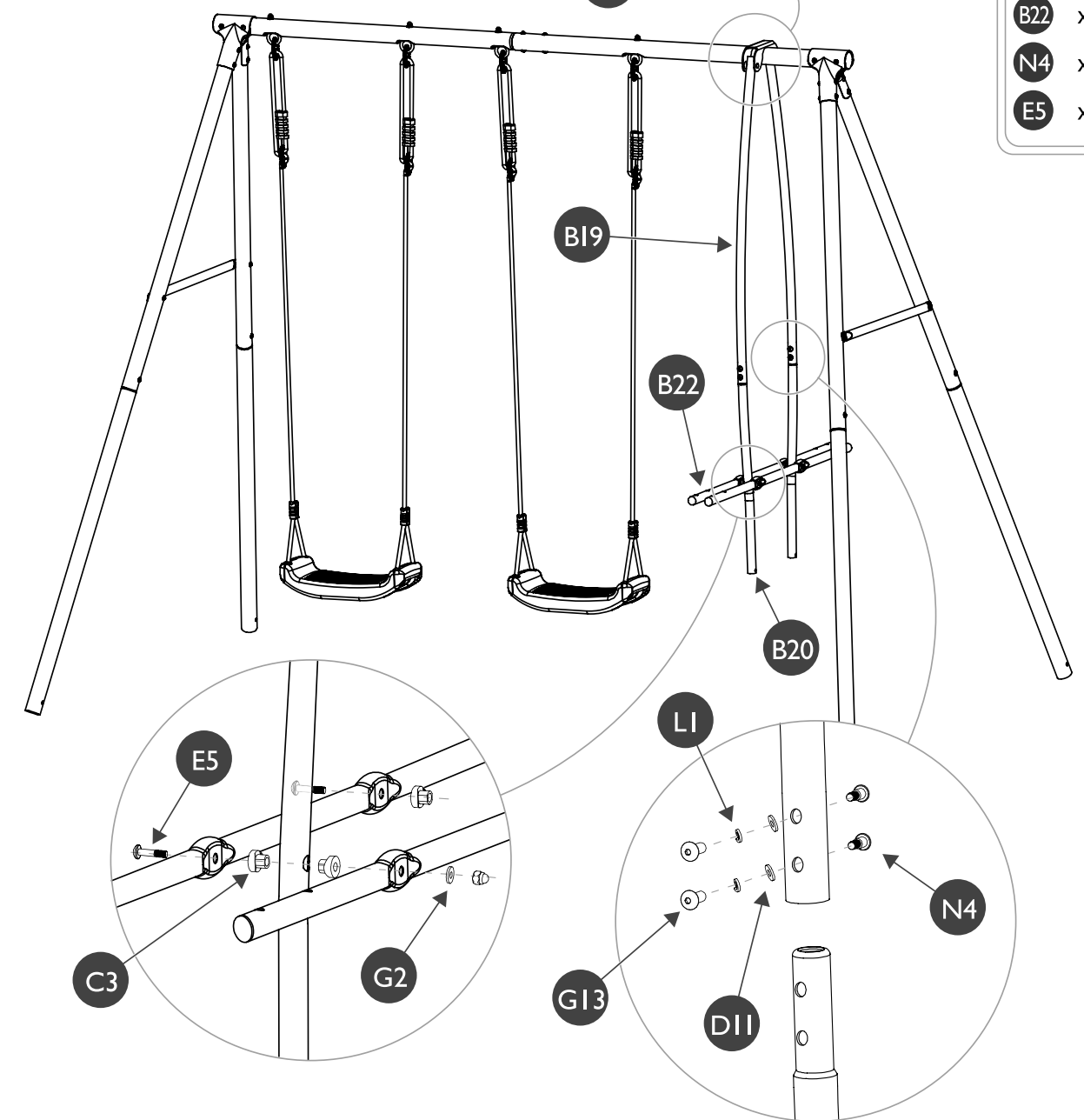


**Warning: Maximum fall heights 189 cm**

3

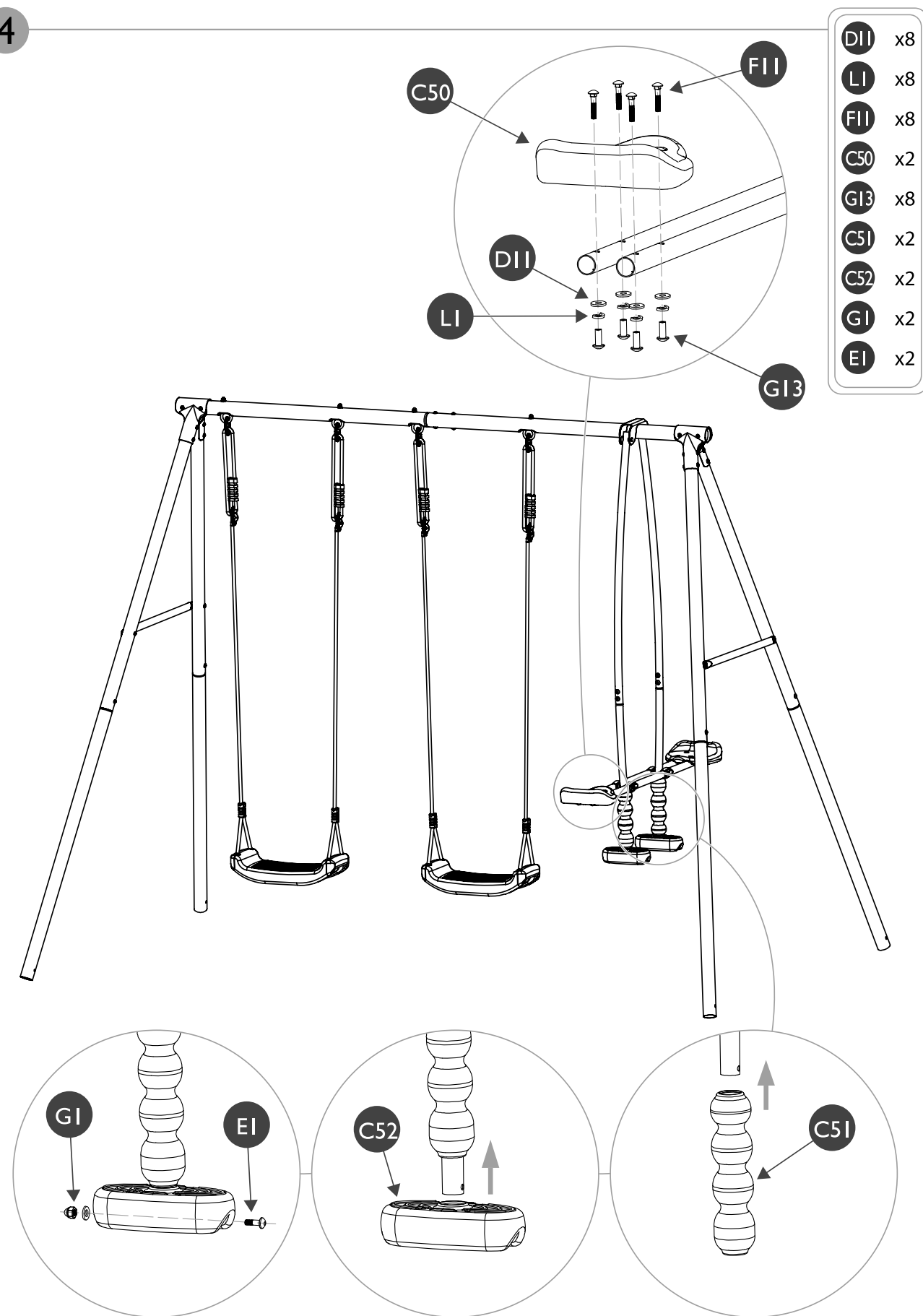


Tighten G2 nut,  
until  $x = 34\text{mm}$



D11	x4
G2	x4
F2	x2
D12	x2
C3	x8
G13	x4
L1	x4
B19	x2
B20	x2
B22	x2
N4	x4
E5	x2

4



5

